



相の谷 1 号墳 (西北方より)

正岡睦夫氏提供



同 前方部西斜面

正岡睦夫氏提供



相の谷 1 号墳主体部

正岡睦夫氏提供



遺物出土状態-1 鉄製品



遺物出土状態-2 鉄剣



遺物出土状態-3 禽獣画像鏡



遺物出土状態-4 甕龍鏡

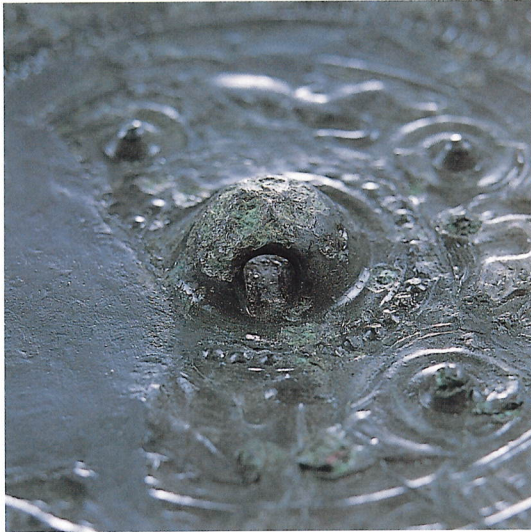


(S=1:1)



禽獸画像鏡

図版 4



禽獸画像鏡 鈕孔-1



同 鈕孔-2



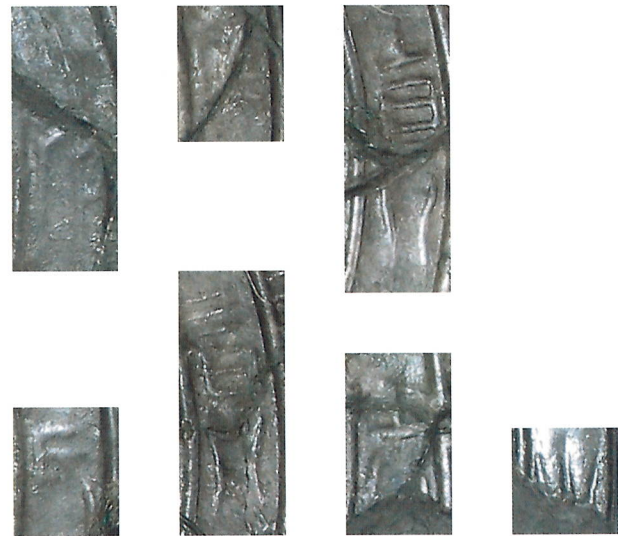
同 獣像



同 鳥像-1



同 鳥像-2



同 銘文



(S=1:1)



鼉龍鏡（獸紋鏡）

図版 6



龍鏡（獸紋鏡） 鈕孔-1



同 鈕孔-2



同 獸形-1



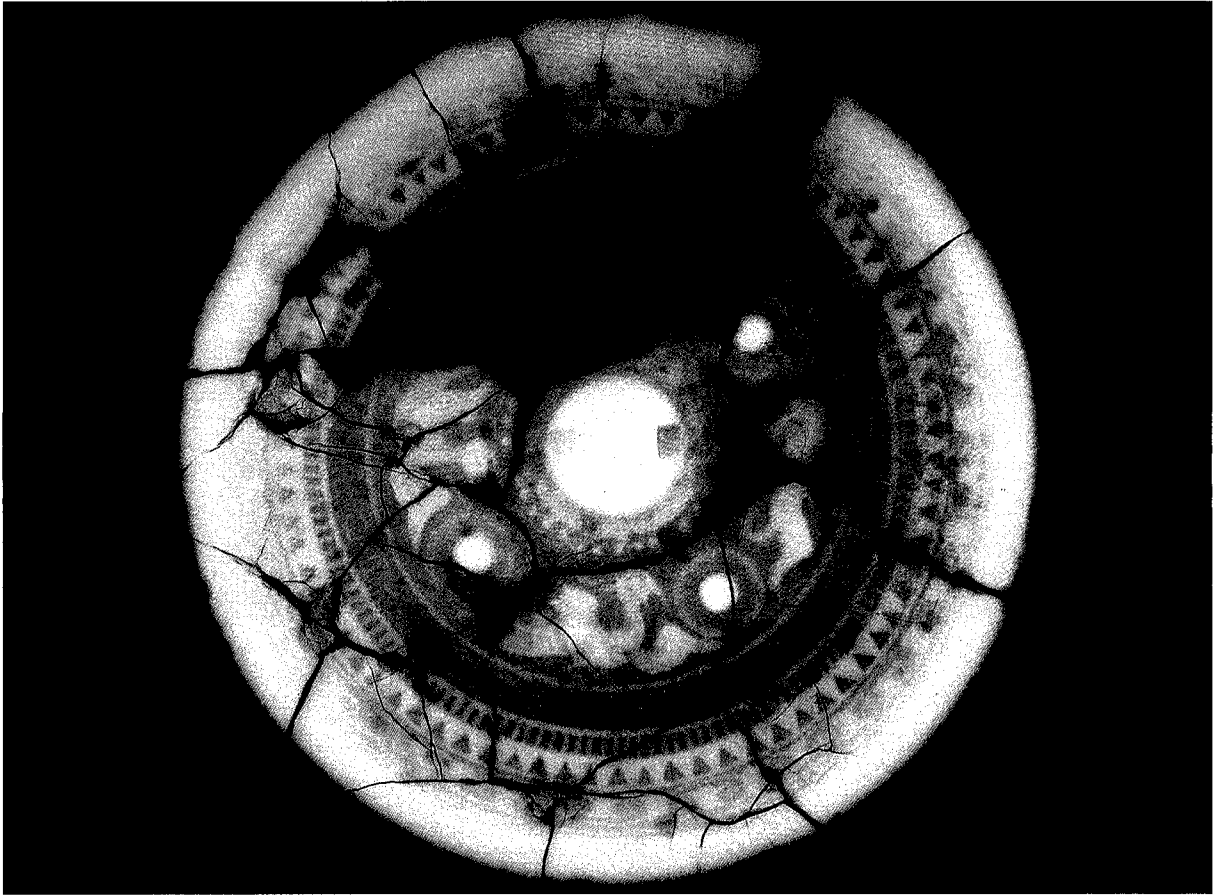
同 獸形-2



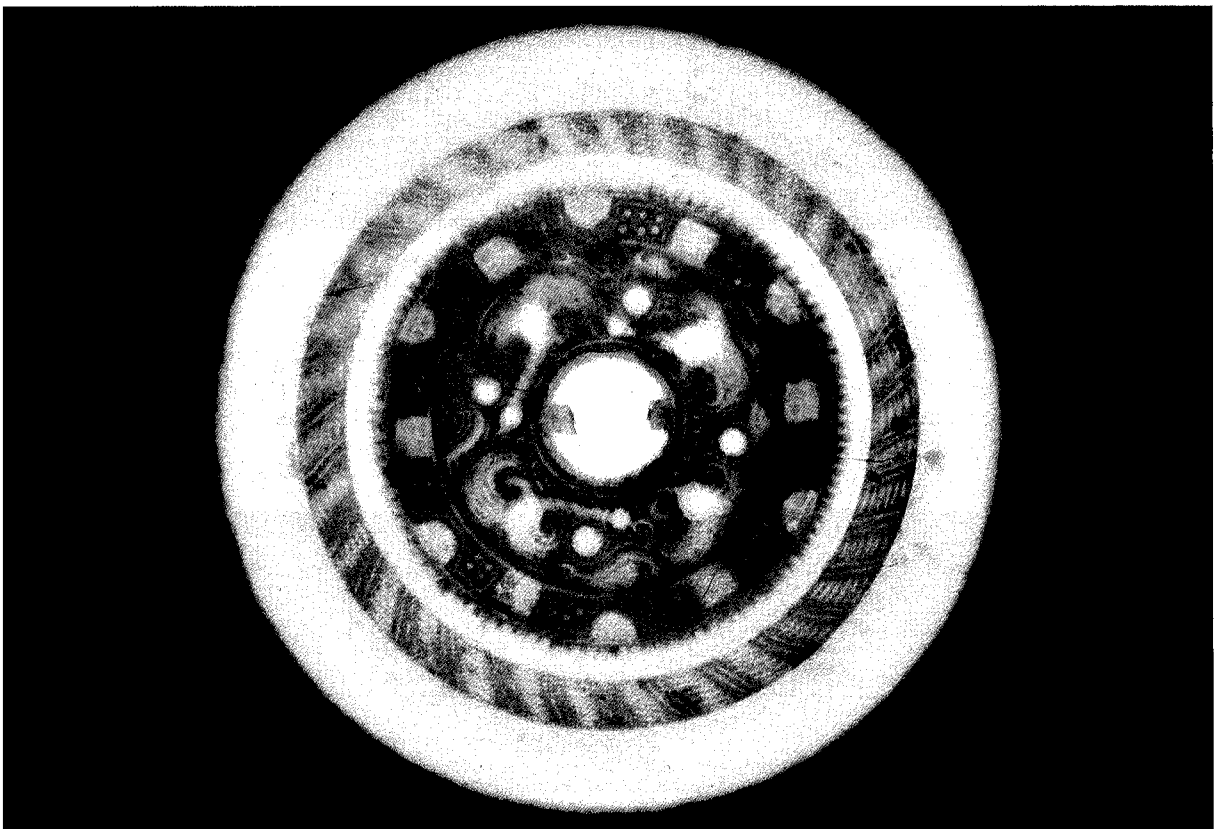
同 獸形-3



同 獸形-4



禽獸面象鏡 X線写真 (財元興寺文化財研究所撮影)

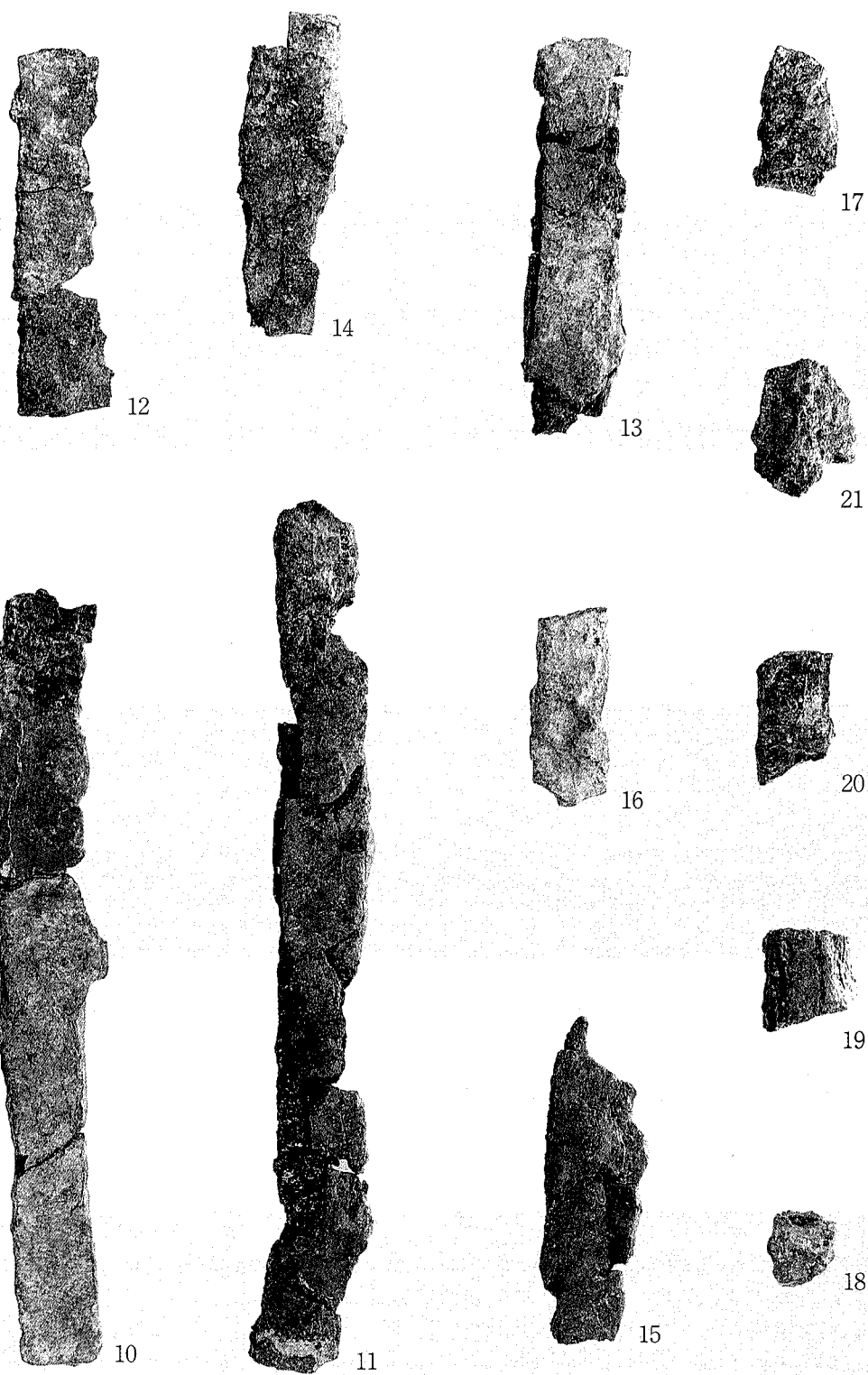


龍鏡 (獸紋鏡) X線写真 (財元興寺文化財研究所撮影)

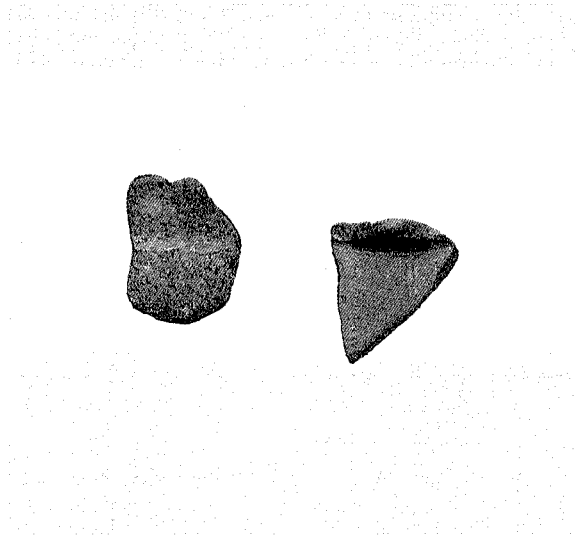


武器一 (約 1/2)

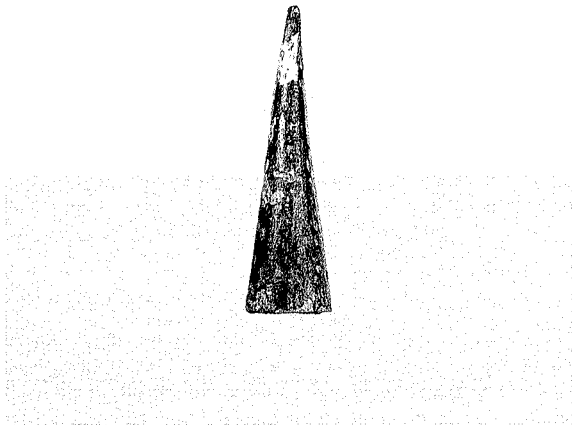




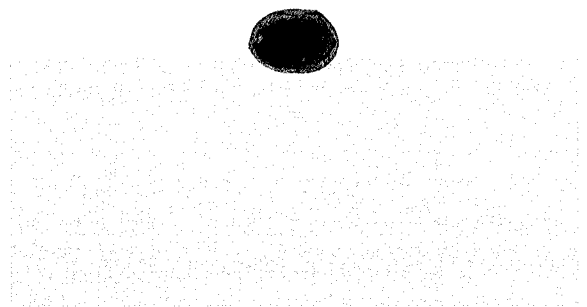
武器一 2 (約 1/2)



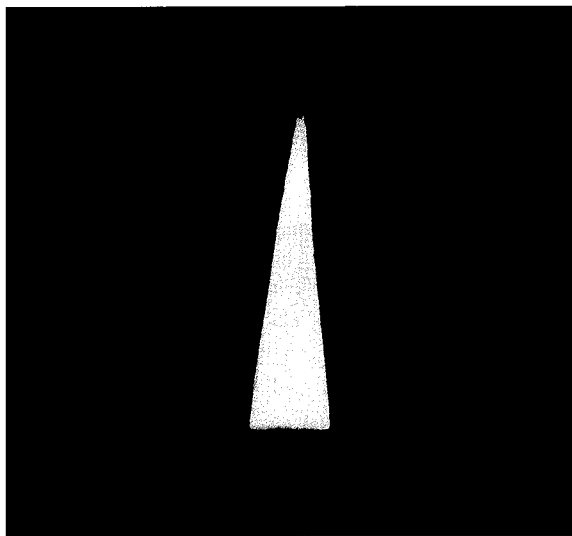
土師器 (約2/3)



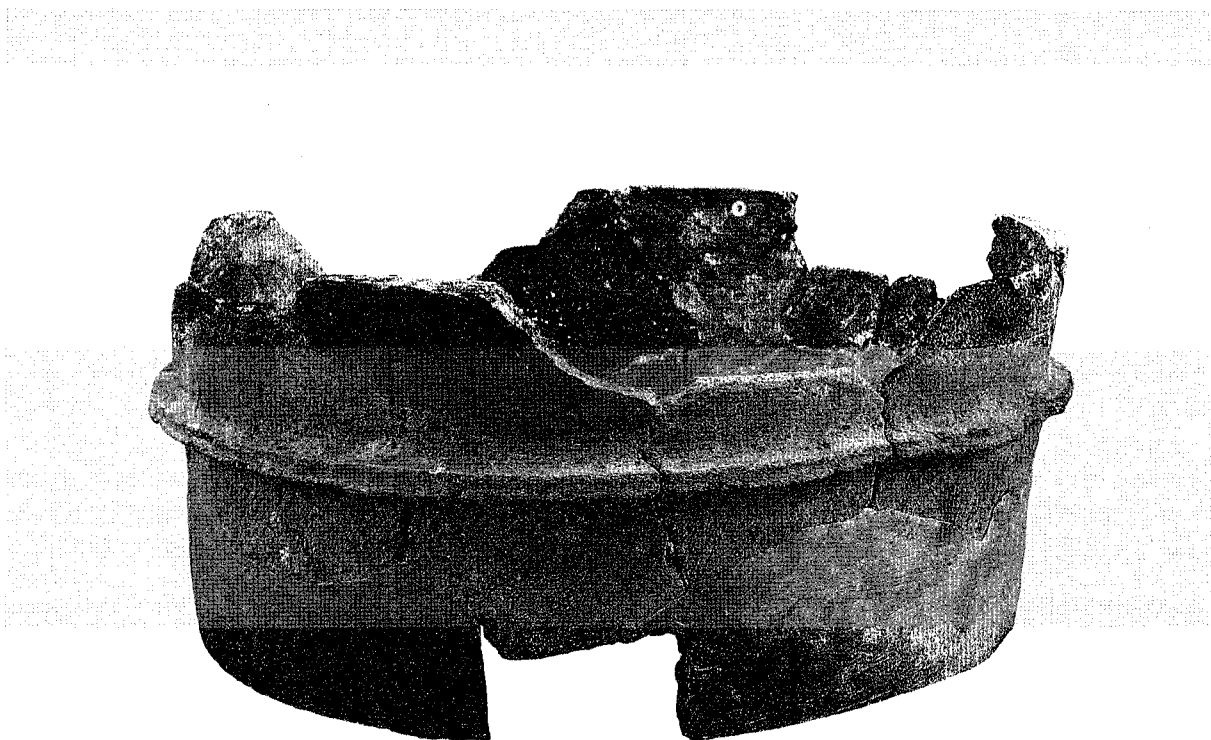
円錐形銅製品 (S=1:1)



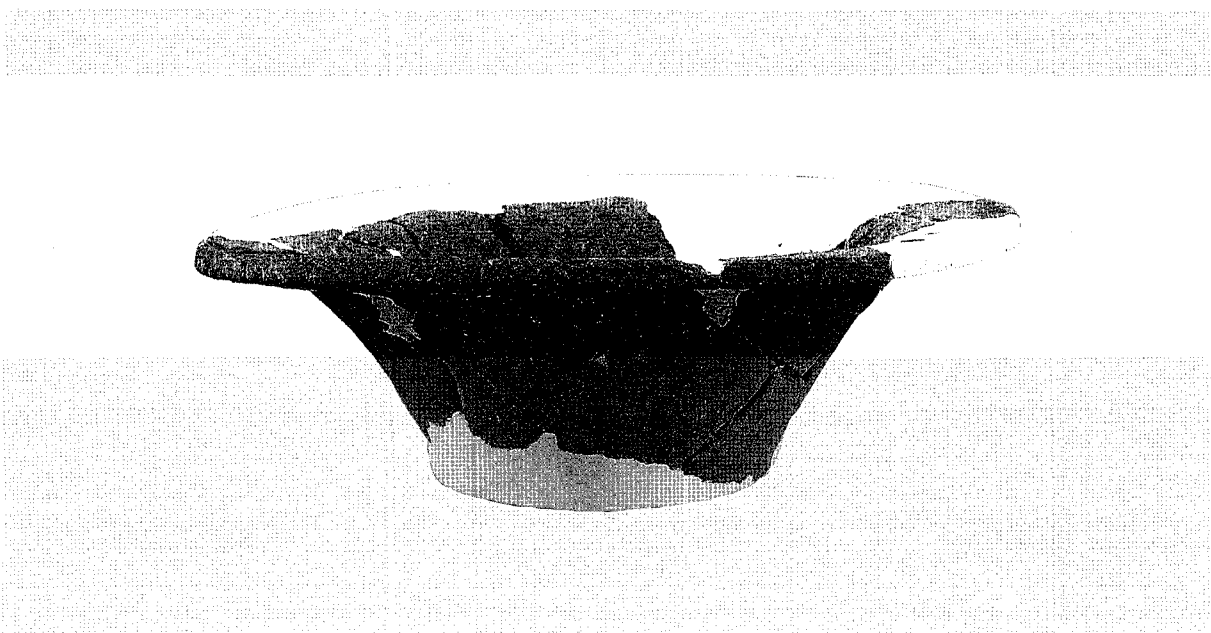
同 下部



同 X線写真



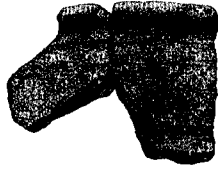
7



61



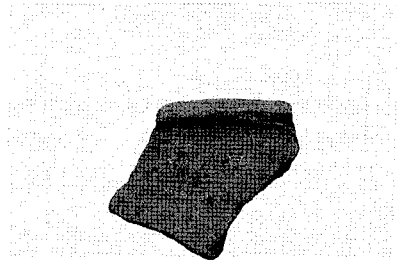
1



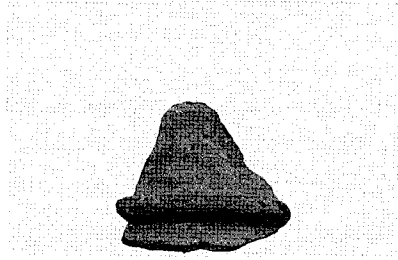
2



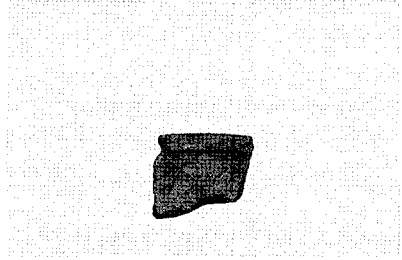
3



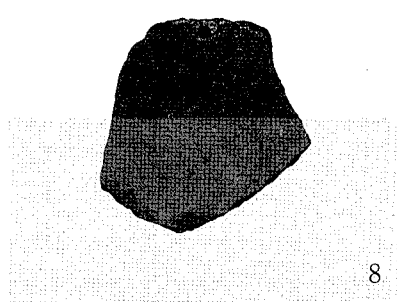
4



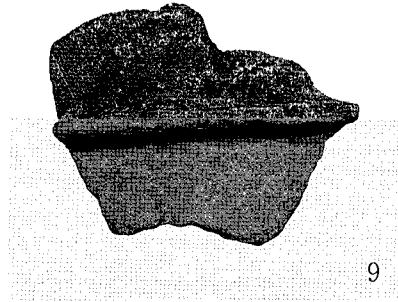
5



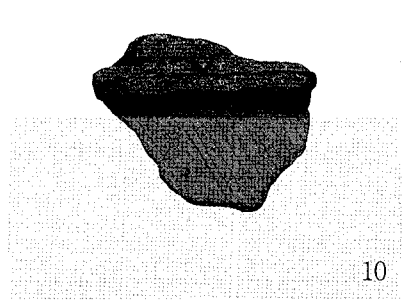
6



8



9



10



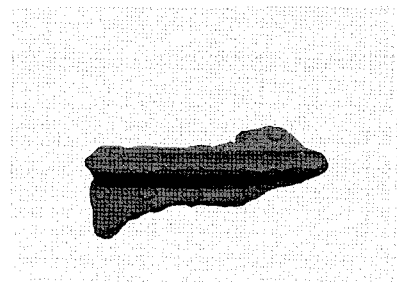
11



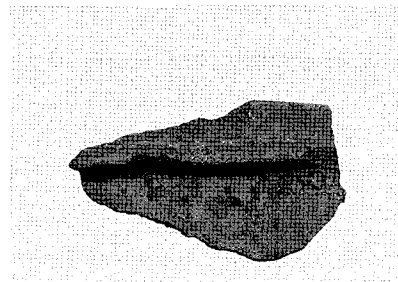
12



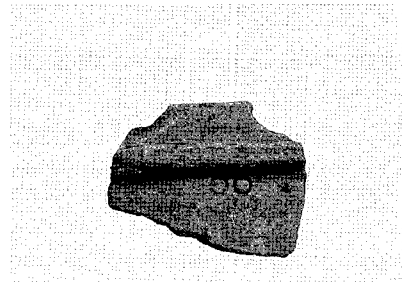
13



14



15



16



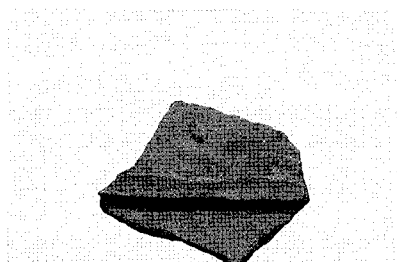
17



18



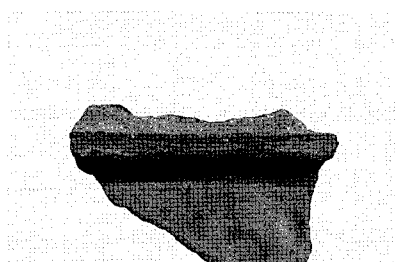
19



20



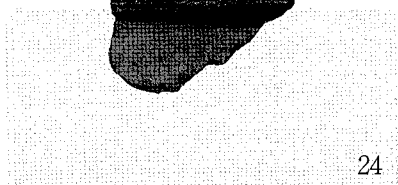
21



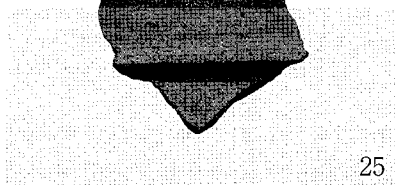
22



23



24



25



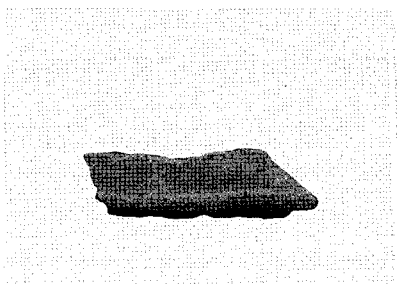
26



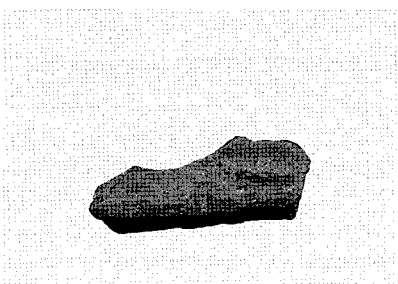
27



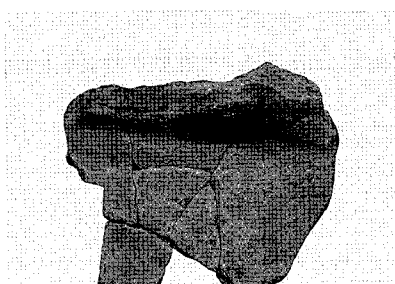
28



29



30



31



32



33



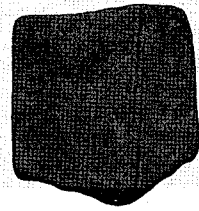
34



35



36



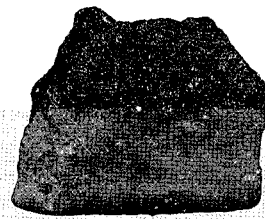
37



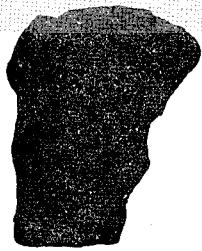
38



39



40



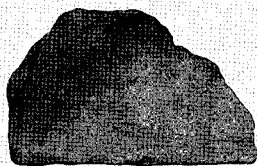
41



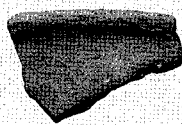
42



43



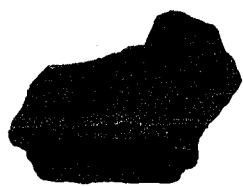
44



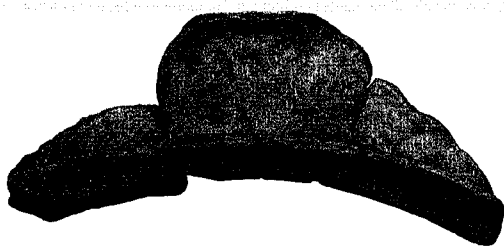
45



46



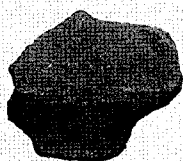
47



48



49



50



51



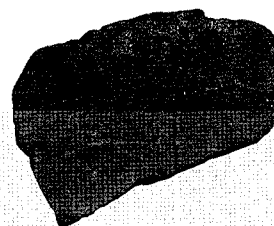
52



53



54



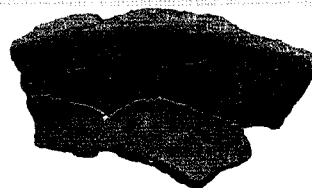
55



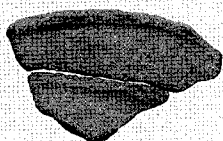
56



57



58



59



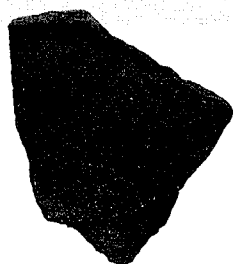
60



62



63



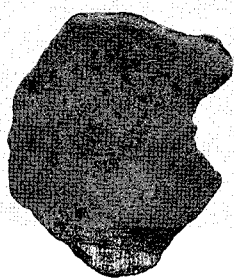
64



65



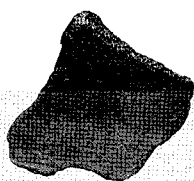
66



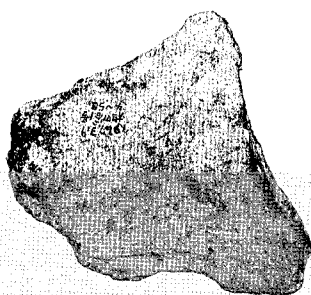
67



67 内面拡大



68



68 内面拡大



69



70



71



72



73



74



75





76



77



78



79



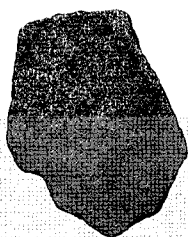
80



81



82



83



84



85



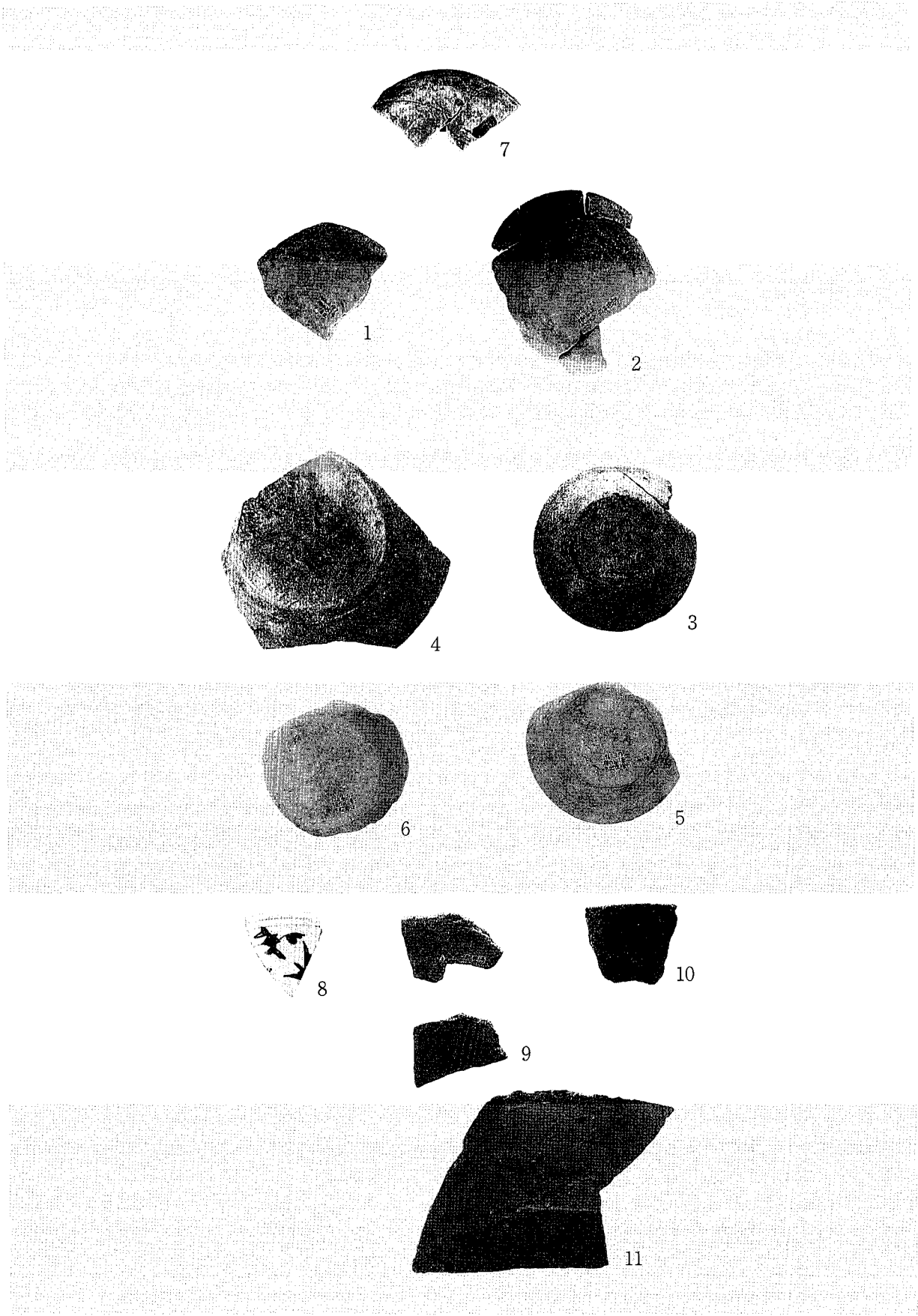
86



87

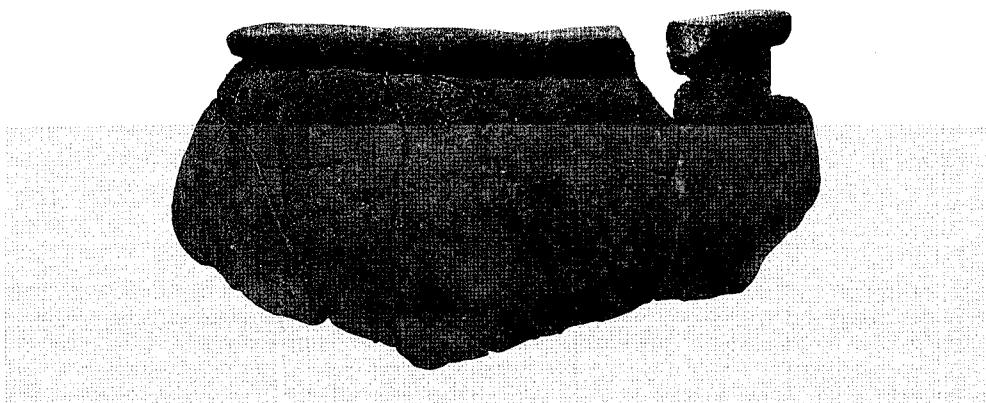


88

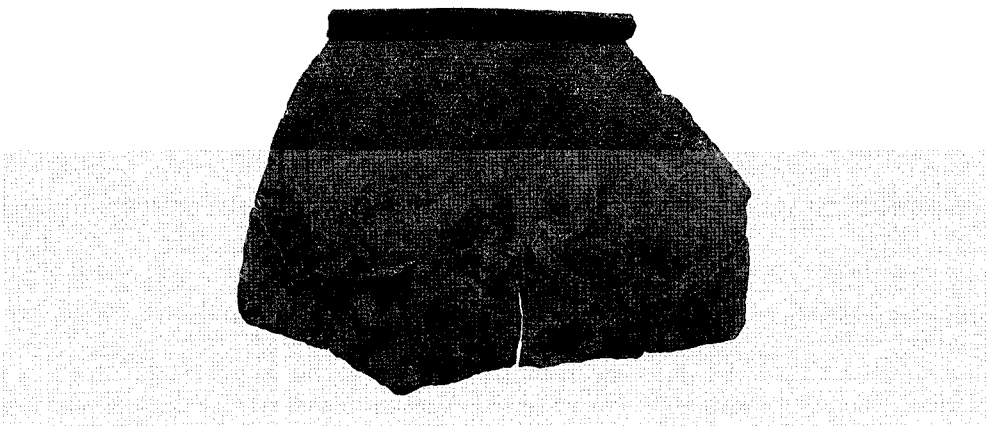




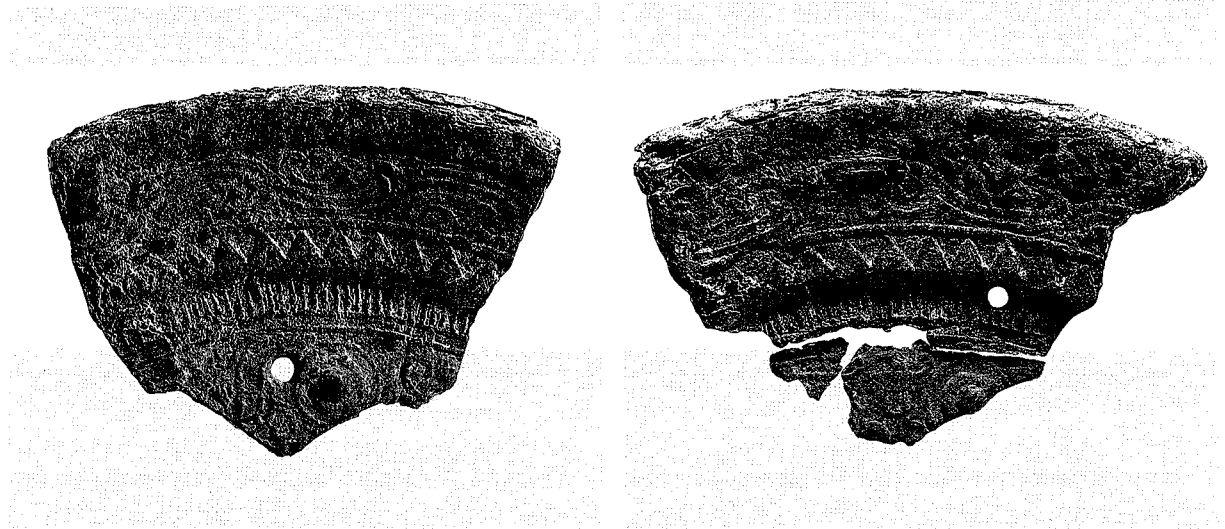
12



13



14

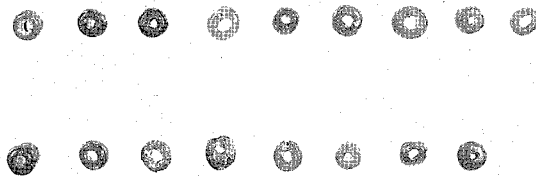


相の谷9号墓1号主体出土破鏡-1 (S=1:1) 同 破鏡-2 (S=1:1)



同 破鏡-1 鏡表 (S=1:1)

同 破鏡-2 鏡表 (S=1:1)



同 玉類 (S=1:1)



相の谷9号墓出土鉄剣・劔（約1/2）



同 X線写真（約1/2）

